

The ExxonMobil logo is displayed in red text against a background of a blue sky with white clouds. The logo consists of the word "Exxon" in a bold, sans-serif font, followed by "Mobil" in a similar font, with a red chevron symbol integrated between the two words.

**ExxonMobil**

South East Australia  
Carbon Capture and Storage  
(SEA CSS) Project

Pipeline activities

Esso Australia Resources Pty Ltd (Esso Australia), together with its co-venturer, BHP Petroleum (Bass Strait) Pty Ltd (a Woodside Energy company), is undertaking early front-end engineering design (pre-FEED) studies to determine the potential for carbon capture and storage to reduce greenhouse gas emissions from multiple industries in the Gippsland Basin.

The South East Australia carbon capture and storage (SEA CCS) hub would initially use existing infrastructure to store CO<sub>2</sub> in the depleted Bream field off the coast of Gippsland, Victoria. Along with existing infrastructure, a new pipeline will be required to transport CO<sub>2</sub> to the offshore injection site. The new pipeline is expected to be approximately 19 kilometres in length and, along with existing infrastructure, will be required to transport CO<sub>2</sub> to the offshore injection site.

Based on preliminary design studies the proposed route is located within an existing easement that connects the Longford Gas Conditioning Plant to an existing valve site at Paradise Beach.



### Acknowledgement of traditional owners



Esso Australia acknowledges the Traditional Custodians of Country, the Gunaikurnai Peoples, and the land upon which the SEA CCS Project will be located.

We recognise the Gunaikurnai Peoples' continuing connection to land, sea, culture and community, and pay our respects to Elders past and present.

## Survey activities

Esso Australia will be completing a number of field surveys to inform the engineering design and environmental assessment of the proposed pipeline. Survey activities may include cultural heritage, flora and fauna, soil/land assessments, cadastral and features/services identification. Survey areas will also consider land that may be required for setting up or work areas.

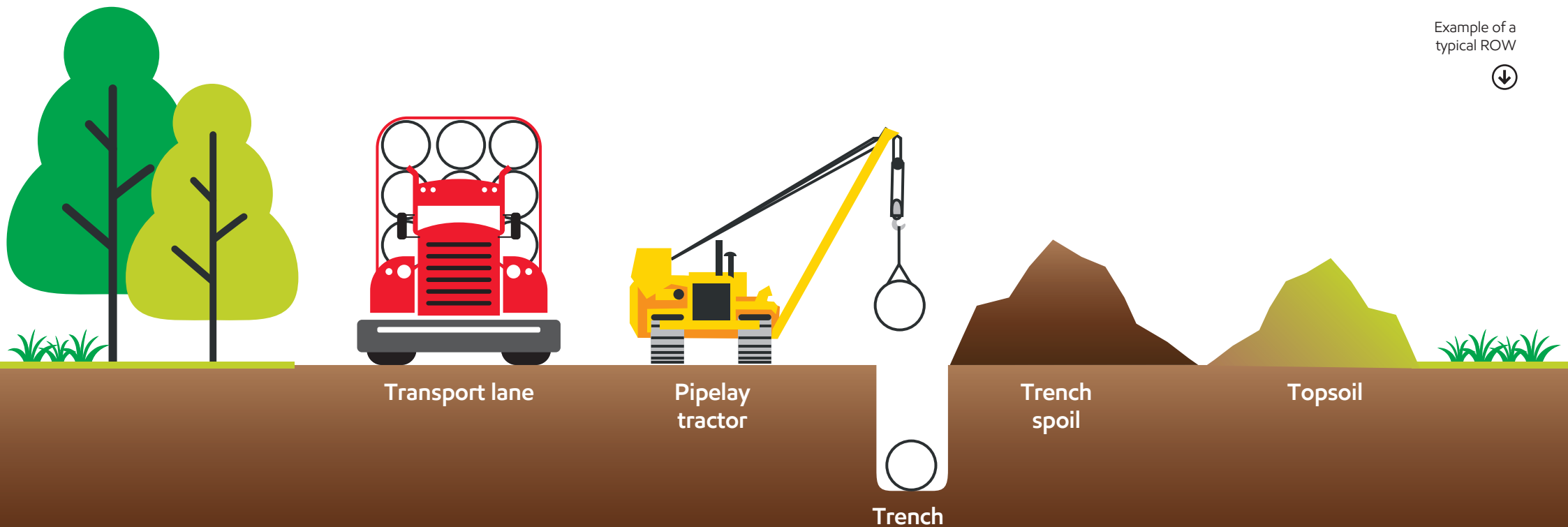
Landowners and occupiers will be consulted regarding these surveys and requirements for land access. The Notice of Intention to Enter Land for Survey will be provided to relevant landowners and occupiers and will include a description of survey activities.

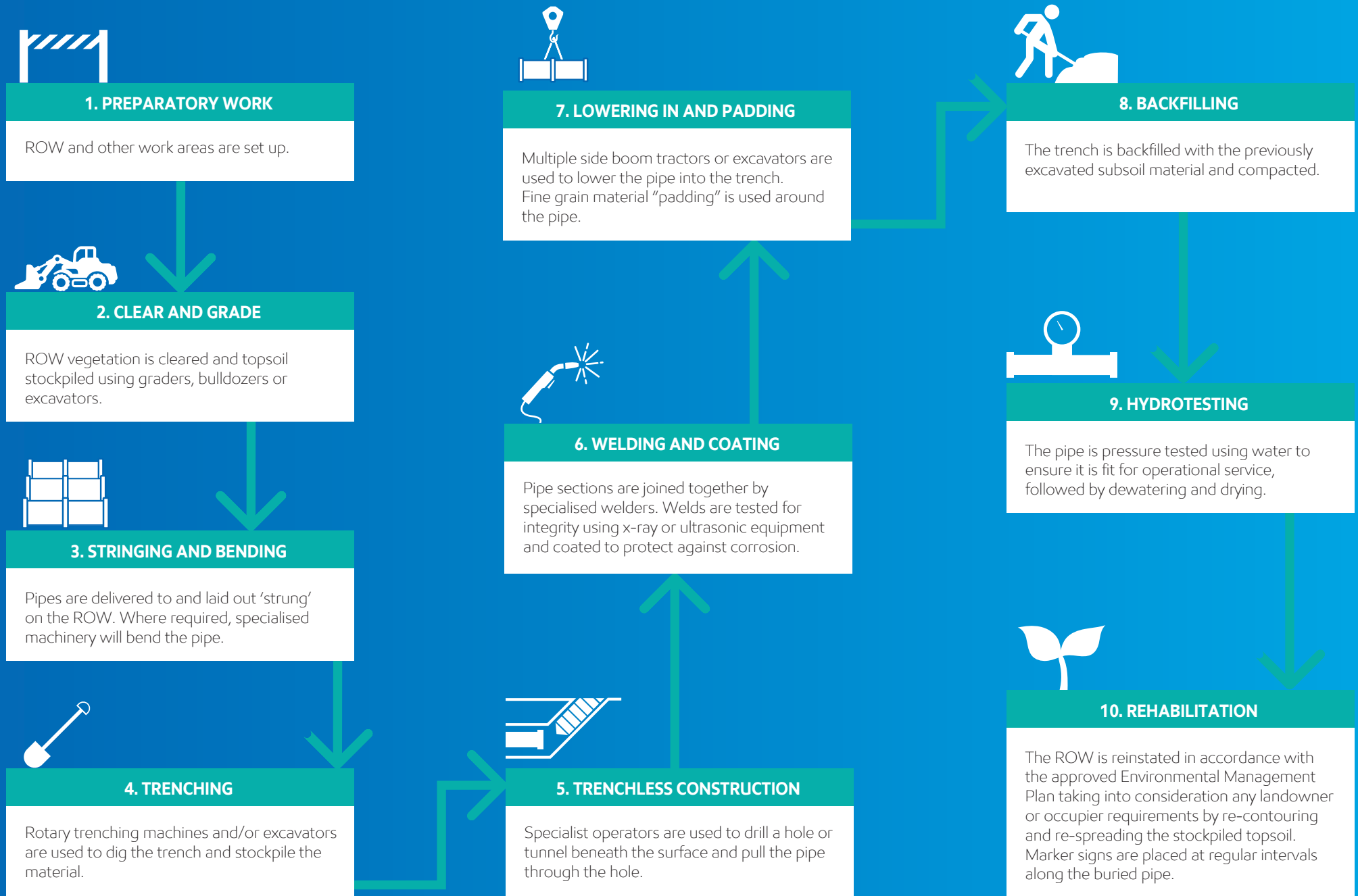
## Construction activities

Construction works are subject to establishing all relevant regulatory approvals and the necessary agreements with landowners and occupiers.

Pipeline construction will involve the use of specialised equipment and will take into consideration current land uses. Pipeline installation will involve either trenched or trenchless construction methods for more complex or environmentally sensitive areas.

Construction will occur within the area known as the construction 'right of way' (ROW) as well as identified additional workspace areas. Standard onshore pipeline techniques will be used.





## Operational activities

Esso Australia will seek consent from regulators before commissioning and operating the pipeline. Ongoing access to the easement will be required for maintenance and to assess pipeline integrity. All operational activities will be conducted in accordance with approved operations environment and safety management plans. In particular:

- Environment Management Plan: In developing the operations Environmental Management Plan, ongoing activities that support the operation of the pipeline will be assessed and work practices defined to minimise impacts on the environment.
- Safety Management Plan: This Plan will be developed to provide an integrated safety management approach in accordance with Esso Australia's existing safety management policies and practices for pipeline operations.



### KEY PIPELINE FACTS

#### Location

Within existing easement that extends from Longford Gas Conditioning Plant to an existing valve site at Paradise Beach

#### Depth

Mostly buried underground with aboveground components at existing valve sites

#### Diameter

350 millimetres (approximate dimension – subject to final design engineering)

#### Length

~19 kilometres

#### Product

Compressed carbon dioxide



# About Esso Australia

Esso Australia is a subsidiary of ExxonMobil, one of the largest publicly traded international energy and petrochemical companies that creates solutions to improve quality of life and meet society's evolving needs. In Australia, our reliable supply of natural gas is powering local jobs, providing the energy used by local manufacturers, hospitality venues, medical facilities and construction firms, and supporting the countless industries that rely on their products and services. The ExxonMobil Australia group has been operating in Australia since 1895.

Learn more about us at [www.exxonmobil.com.au](http://www.exxonmobil.com.au).  
Follow us on Twitter and Instagram: @exxonmobil\_aus.



## How to contact us

Contact person: Simon Kemp

T: +61 3 9261 0000

E: [consultation@exxonmobil.com](mailto:consultation@exxonmobil.com)

W: [www.exxonmobil.com.au](http://www.exxonmobil.com.au)

## Independent advice on the *Pipelines Act 2005*

### Department of Environment, Land, Water and Planning

T: 0439 799 598

E: [pipeline.regulation@delwp.vic.gov.au](mailto:pipeline.regulation@delwp.vic.gov.au)

W: [www.energy.vic.gov.au/pipelines](http://www.energy.vic.gov.au/pipelines)

### Energy Safe Victoria

T: 03 9203 9700 or 1800 800 158 (freecall)

E: [info@energysafe.vic.gov.au](mailto:info@energysafe.vic.gov.au)

W: [www.esv.vic.gov.au](http://www.esv.vic.gov.au)